

Children's Medical Services



To ensure that children with special health care needs and children from low-income families have access to health services





How many programs are part of CMS?

California Children's Services (CCS)

Medical Therapy Program (MTP)

Child Health & Disability Prevention (CHDP)

Health Care Program for Children in Foster Care
(HCPCFC)

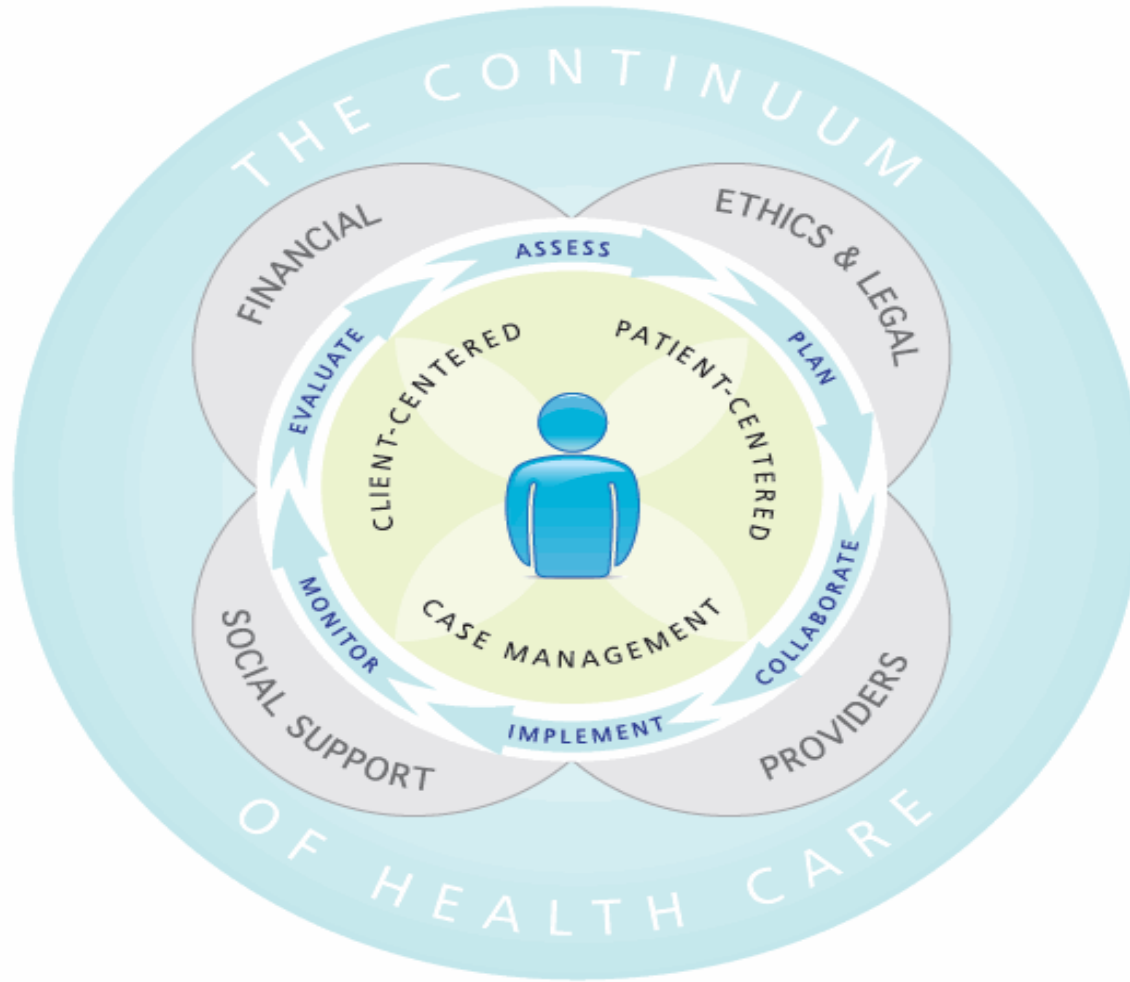


California Children's Services (CCS)

CCS is a statewide healthcare program that provides nursing case management services to patients under 21 years old who have eligible physical limitation, life threatening and chronic or disabling conditions.



Nurse Case Management



CMSA Standards of Practice for Case Management



CCS Eligible Conditions



Apert syndrome

- Fused fingers



Cleft Palate



What is Child Health and Disability Prevention Program (CHDP)?

Prevention program that delivers periodic health assessments & services to low income children & youth in California



CHDP Program Overview

- Provides periodic health assessment and immunizations to low-income children
- Coordinate follow-up care for conditions found during well-child exams
- Support and monitor providers to ensure high quality of healthcare services



Health Care Program for Children in Foster Care (HCPCFC)

Provides comprehensive health care consultations and collaboration with Children's Social Workers (CSW) and Probation Officers (PO) to promote quality health care services for the children in the foster care system.



HCPCFC Public Health Nursing Roles

- Provides health care **consultation** to Children Social Worker (CSW), Probation Officer (PO), Primary Care Physician (PCP) and Caregiver (CG)
- Collaborates to ensure continuum of health care
- Review, assess and update child's medical folder



Case Study

How the 3 programs work together

- 5 month-old baby boy
- Multiple ER visits
- Arrived at ER with parents with severe viral bronchitis persisting for 9 days
- In the ER the baby developed an altered level of consciousness and had a seizure.
- A skeletal survey revealed: skull fracture, rib fracture, and right radius fracture.



CMS Program Interacts with District Nurses

- Referral source to family
- Partnership with District Nurses to enhance information about referrals and resources within the community



Children's Medical Services

Contact resources for CMS programs:

- CCS : 1-800-288-4584

www.dhs.ca.gov/pcfh/cms/ccs

- CHDP: 1-800-993-2437

www.dhs.ca.gov/pcfh/cms/chdp

- HCPCFC: 1-800-540-4000

www.dhs.ca.gov/pcfh/cms/hcpcfc



WHAT QUESTIONS DO YOU HAVE?

